



CHAIN  
CONTROL



MOTOR  
CONTROL

## APOLLO COLLECTION Roller Shades

APOLLO CASSETTE MOUNT Roller Shades  
APOLLO DIRECT MOUNT Roller Shades

THE WORLD  
BEHIND  
YOUR  
DRAPERIES





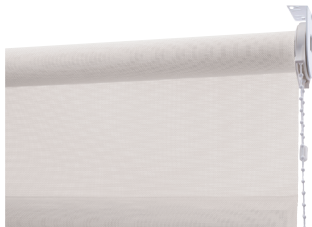
# APOLLO COLLECTION ROLLER SHADES



Scan for more information on FOREST Apollo Basic Roller Shades



25 White



25 White

## APOLLO CASSETTE & DIRECT MOUNT

- Wall or ceiling mount for residential or contract use
- Maximum weight is 8 lbs. 13 oz.
- 1 1/2" / 38mm tube and a bi-directional clutch

### CASSETTE MOUNT ASSEMBLED SYSTEM

Includes stock fabric (see pages 33-34 for all fabric options), 38mm tube, roller mechanisms, brackets, bracket covers, valance, bottom rail with end caps, and child safety device.

### DIRECT MOUNT ASSEMBLED SYSTEM

Includes stock fabric (see pages 33-34 for all fabric options), 38mm tube, roller mechanisms, brackets, bracket covers, bottom rail with end caps, and child safety device.





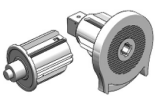

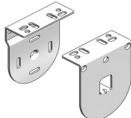


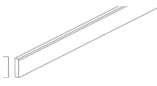

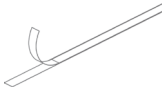




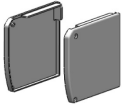
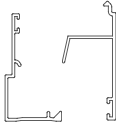
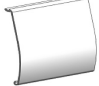
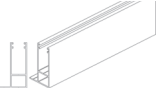

## MOTORIZED CASSETTE OR DIRECT MOUNT

Choose a cassette or direct mount shade above, add the motor, the charging cable and choice of control device from below. Maximum recommended weight is 16 lbs. per shade.

| COMPONENT   |   |
|---|---|
| <ul style="list-style-type: none"> <li>• <i>COMING SOON!</i></li> </ul> | <p><b>68002-25</b><br/>1.8 Nm Tubular Lithium iOn Motor, 3-year warranty<br/>Use with Forest controls</p>       |
| <ul style="list-style-type: none"> <li>• </li> </ul>                    | <p><b>78003-25</b><br/>Micro USB Charging Cable for 68000-25 and 68002-25</p>                                   |
| <ul style="list-style-type: none"> <li>• </li> </ul>                    | <p><b>52931-25D</b> white<br/><b>59D</b> black<br/>Diamond Sense Remote RF, 15 channel w/ holder, range 98'</p> |

| COMPONENT   |  |
|---|--|
| <ul style="list-style-type: none"> <li>• </li> </ul>                    | <p><b>52933-25</b> white<br/><b>59</b> black<br/>Diamond Sense Wall Switch<br/>2 channel<br/>Use with 68002-25</p> |
| <ul style="list-style-type: none"> <li>• <i>COMING SOON!</i></li> </ul> | <p><b>52960-25</b> white<br/><b>59</b> black<br/>EasyTouch Remote RF, 6 channel<br/>Use with 68002-25</p>          |

# APOLLO COLLECTION ROLLER SHADES

| CASSETTE | DIRECT | COMPONENT   | CASSETTE | DIRECT | COMPONENT  |
|----------|--------|---|----------|--------|--|
| •        | •      |  <p><b>71119-90</b><br/>1 1/2" / 38mm<br/>19' Tube, aluminum</p>   | •        | •      |  <p>Endless Chain<br/>25 white plastic or 90 nickel<br/><b>49020-25, 90, 29"</b><br/><b>49021-25, 90, 39"</b><br/><b>49022-25, 90, 49"</b><br/><b>49023-25, 90, 59"</b><br/><b>49024-25, 90, 69"</b><br/><b>49025-25, 90, 79"</b><br/><b>49026-25, 90, 89"</b><br/><b>49027-25, 90, 99"</b></p> |
| •        | •      |  <p><b>72311-25</b><br/>Hold Down Strip<br/>with adhesive for tube<br/>2,000 ft/roll</p>                                     | •        | •      |  <p><b>79005-00</b><br/>Clear Ball Stopper</p>  |
| •        | •      |  <p><b>72309HD-25</b><br/>Heavy Duty Clutch<br/>w/ end plug</p>  | •        | •      |  <p><b>49501-00</b><br/>Tension Device, child safety</p>  |
| •        | •      |  <p><b>72306-25</b><br/>Multi-Purpose Bracket<br/>steel, 2 pcs</p>   | •        | •      |  <p><b>810219-25</b><br/>Bottom Rail</p>  |
| •        | •      |  <p><b>72304-25</b><br/>Bracket Cover</p>   | •        | •      |  <p><b>810001-25</b><br/>Weight Insert<br/>for bottom rail</p>   |
| •        | •      |  <p><b>72307-90</b><br/>Wall Bracket<br/>steel</p>   | •        | •      |  <p><b>810019-25</b><br/>Adhesive Tape<br/>for bottom rail</p>   |
| •        | •      |  <p><b>72308-90</b><br/>Ceiling Bracket<br/>steel</p>  | •        | •      |  <p><b>830004-25</b><br/>End Cap<br/>for bottom rail</p>  |
| •        | •      |  <p><b>71312-25</b><br/>Cassette Headrail, 13'</p> <p><b>79001-25</b><br/>Screw, 2 needed per headrail</p>                 | •        | •      |  <p><b>810000-00</b><br/>Brush for bottom rail</p>  |
| •        | •      |  <p><b>72314-25</b><br/>Cassette Bracket Covers</p> <p><b>79001-25</b> Screw, 6 needed per set of 2<br/>bracket covers</p> | •        | •      |  <p>2 Piece Outside Mount<br/>Side Channel<br/><b>71619-25</b> Bottom<br/><b>71719-25</b> Top</p>  |
| •        | •      |  <p><b>71412-25</b><br/>Cassette Valance, 13'<br/>aluminum, white</p>  | •        | •      |  <p><b>810119-25</b><br/>One Piece Inside Mount<br/>Side Channel, 19'</p>  |
|          |        |   | •        | •      |  <p><b>79002-25</b><br/>Brush for side channel</p>  |

• Standard item in assembled sets.

# FOREST IN STOCK FABRICS

## STOCK ROLLER SHADE FABRICS

**OUR STOCK ROLLER SHADE FABRIC PROGRAM** is designed to offer you design trends in each of three categories - screens, light filtering, and blackout. We believe you will find a color and performance factor to meet your needs within this offering. Fabrics were also selected to work together in a single color palette when you need to pair a screen or light filtering fabric with a blackout. This is helpful when using a double roller shade system or when a single room has a variety of shading requirements.

All fabrics are suitable for any of our roller shade systems.

Fabric images are a close representation, but for best results please email [sales@forestdh.com](mailto:sales@forestdh.com) to order a swatch card.



### SCREENS

With two openness factors, 3% and 5%, our screen collection offers the ideal solution for all needs in terms of heat and/or light management. Screen fabrics are made of high-quality polyester yarns for strength and durability.

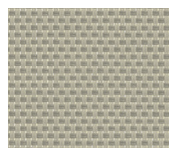
Flame retardant - 118 in. wide



**WHITE**  
74002-99



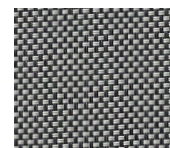
**WHITE CREAM**  
74004-97



**BEIGE CREAM**  
74020-81



**WHITE GREY**  
74002-18



**BLACK GREY**  
74003-55



**BLACK**  
74002-59



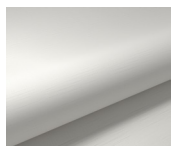
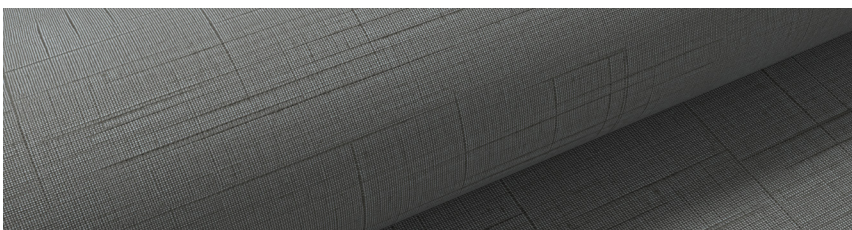
# FOREST IN STOCK FABRICS



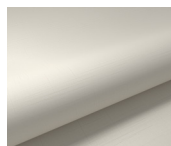
## LIGHT FILTERING

Our light filtering collection offers transparent fabric that filters the light in a delicate way. The inspired fabric is available in a range of timeless colors.

**Flame retardant - 94 in. wide**



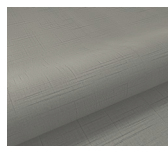
**WHITE**  
75001-04



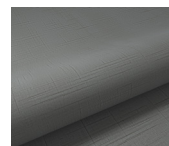
**CREAM**  
75001-16



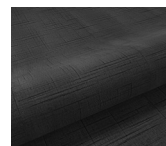
**SAND**  
75001-17



**MIST**  
75001-18



**SLATE**  
75001-19



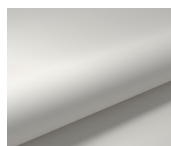
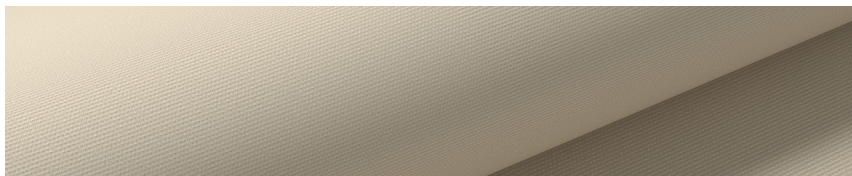
**BLACK**  
75001-20



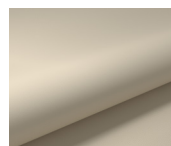
## BLACKOUT

Our blackout fabric has a flocked backing which gives the back side of the fabric a soft textile appeal. With this fabric the room is completely darkened.

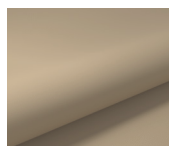
**Flame retardant - 110 in. wide**



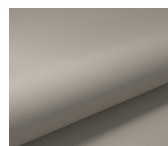
**WHITE**  
75002-04



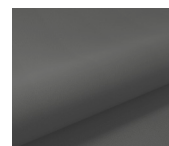
**CREAM**  
75002-16



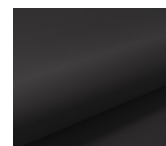
**SAND**  
75002-17



**MIST**  
75002-18



**SLATE**  
75002-19



**BLACK**  
75002-20