

TECHNICAL SPECIFICATION:

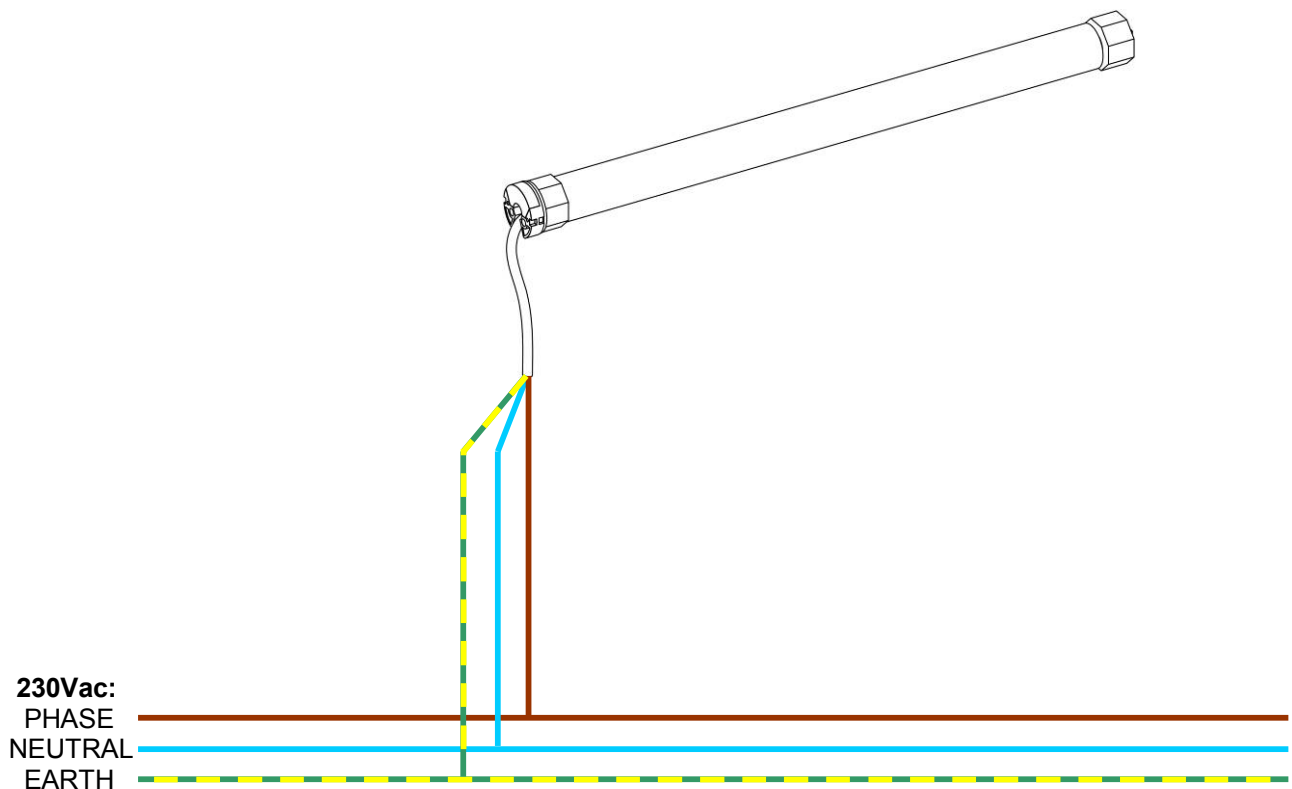
- 3416600099 – 6Nm, 33rpm, build-in receiver, electronic limit setting (110V)
- 3416600110 – 3Nm, 28rpm, build-in receiver, mechanical limit setting (230V)
- 3416600112 – 6Nm, 28rpm, build-in receiver, electronic limit setting (230V)
- 3416600116 – 13Nm, 14rpm, build-in receiver, electronic limit setting (230V)
- max. running time 4 min.
- protection degree IP44 (230V), class B (110V)
- has to be used with Multi remote and/or Multi wall switch RF

IMPORTANT



230V: use only wires BROWN (phase), BLUE (neutral) and GREEN/YELLOW (earth).
The additional two wires are for connecting the optional obstruction sensor.
Make sure these two wires do NOT make contact with power or connect together.

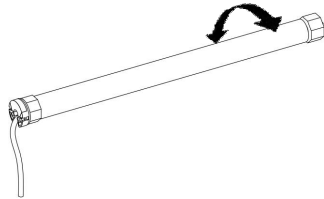
110V: use only wires BLACK (phase), WHITE (neutral) and GREEN (earth).



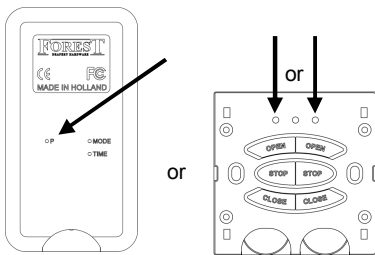
PROGRAMMING REMOTE / WALL SWITCH TO TUBULAR MOTOR (button presses within 6 seconds)

first select the desired channel

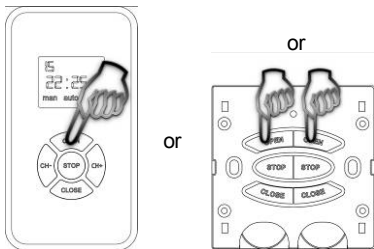
press button on motor, motor will turn short to acknowledge



press button two times



press OPEN-button one time



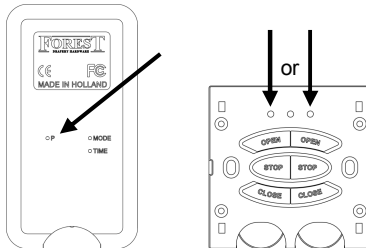
motor will turn to acknowledge

To change the direction of rotation, keep green button on motor pressed for 7 sec, until motor turns to acknowledge.

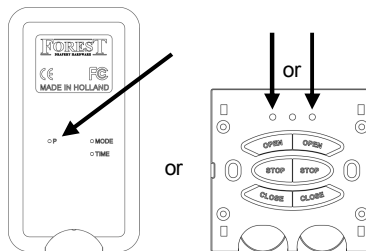
ADD MORE REMOTES / WALL SWITCHES TO TUBULAR MOTOR (button presses within 6 seconds)

first select the desired channel

1st remote: press button two times



2nd remote: press button one time

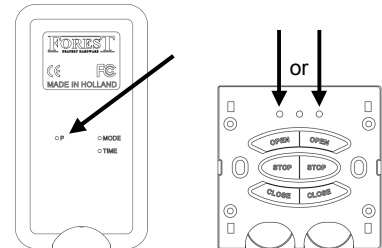


motor will turn to acknowledge

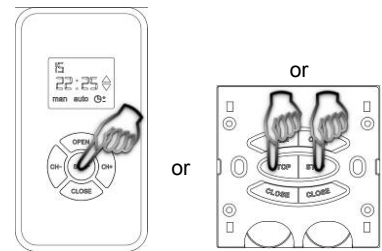
to add another channel on the same remote: select the programmed channel, press button on back of remote 2 times, select desired channel and press button on the back. Motor will turn to acknowledge.

CANCEL ALL REMOTES OR OR WALL SWITCHES (button presses within 6 seconds)

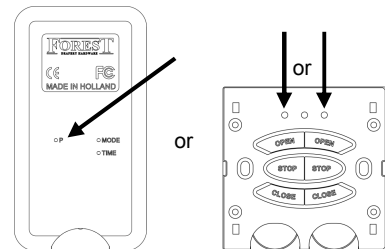
press button one time



press STOP button one time



press button one time



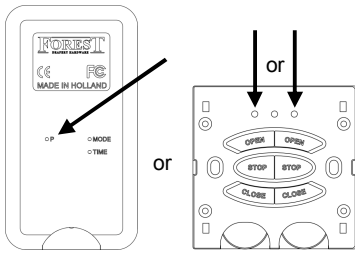
motor will turn to acknowledge

ADJUSTING UPPER AND LOWER END LIMITS:

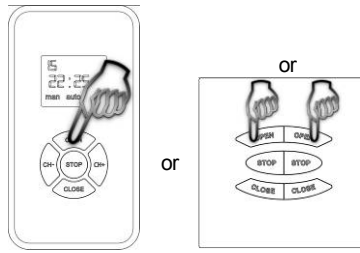


IMPORTANT: when more motors are programmed to one channel, end limits of all motors will be adjusted

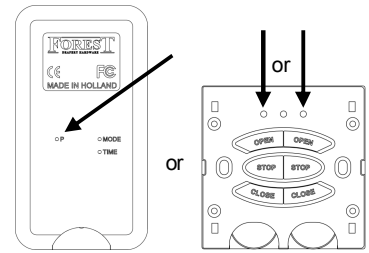
press button one time



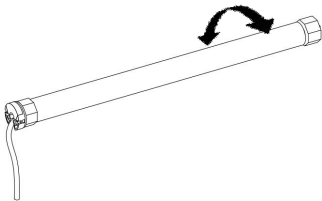
press OPEN button one time



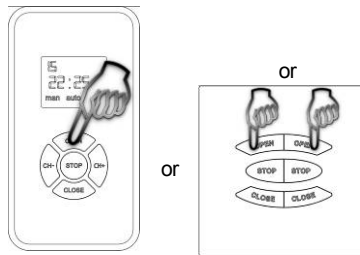
press button one time



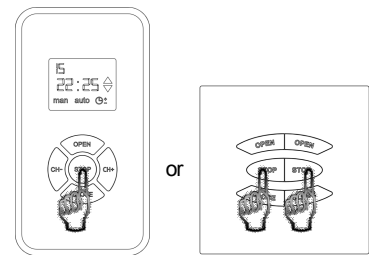
motor will turn to acknowledge



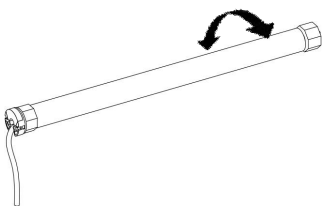
adjust UP limit



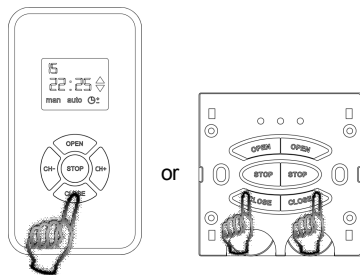
press STOP button when required height is reached. Press STOP button **5 times for 1 seconds** to confirm



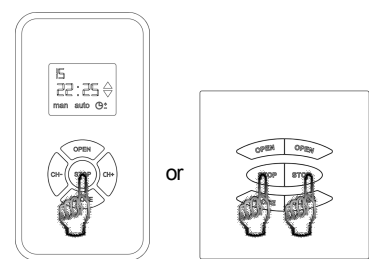
motor will turn to acknowledge



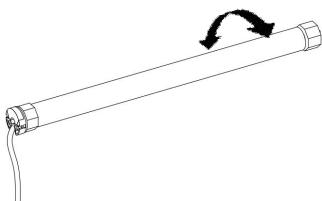
adjust DOWN limit



press STOP button when required height is reached. Press STOP button **5 times for 1 seconds** to confirm



motor will turn to acknowledge, limits has been set successfully.

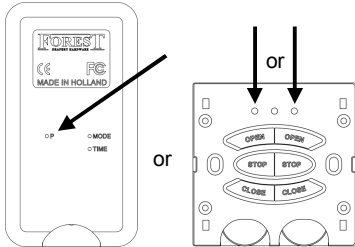


CANCELLATION OF UPPER AND LOWER END LIMITS:

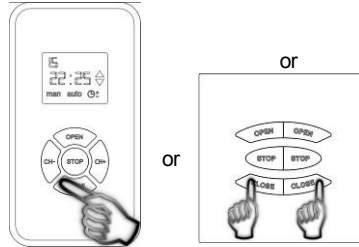


IMPORTANT: When cancelling end limits, all motors programmed to that channel will be cancelled

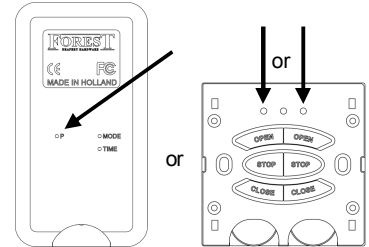
press button one time



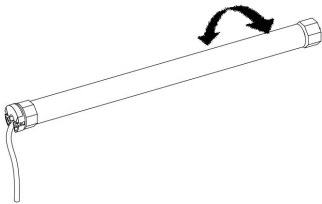
press CLOSE button one time



press button one time



motor will turn to acknowledge,
limits has been set successfully.



REVERSE DIRECTION SETTING:

When motor is not running, press button on motor for ~ 7 seconds, until motor turns to acknowledge.