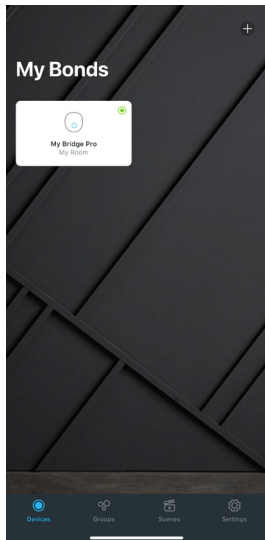


## PAIRING A SHUTTLE MOTOR TO THE BOND BRIDGE PRO SET UP INSTRUCTIONS WITHOUT USING A DIAMOND REMOTE

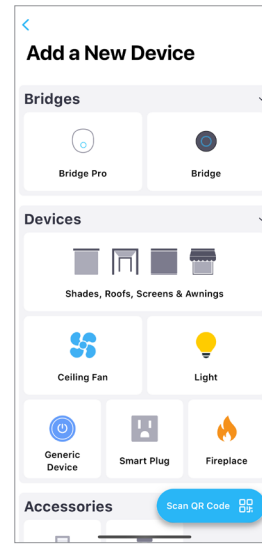
BY SIMPLY FOLLOWING THESE STEP-BY-STEP INSTRUCTIONS, YOU WILL SOON BE ENJOYING YOUR NEW BOND BRIDGE PRO FROM FOREST.

**If you have not already, set limits for your Shuttle motor (Steps 1-4 below). If set up is complete, skip to Step 5.**

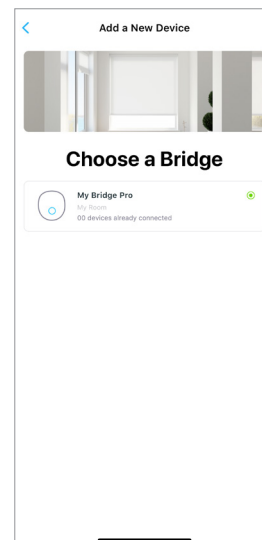
1. Begin with the drapes in the open position
2. Attach the Shuttle motor, then pull the master carrier. The Shuttle motor will automatically set its limits. The drapes will close and then return to the open position.
3. The Shuttle motor's LED 4 will remain lit for 10 seconds. If needed, the open limit can be changed by manually moving the master carrier during this time.
4. When the Shuttle motor's LED 4 is no longer lit, the limits are saved.
5. Open the Bond Home app and tap + in the upper-right corner



6. Tap "Shades, Roofs, Screens, & Awnings"

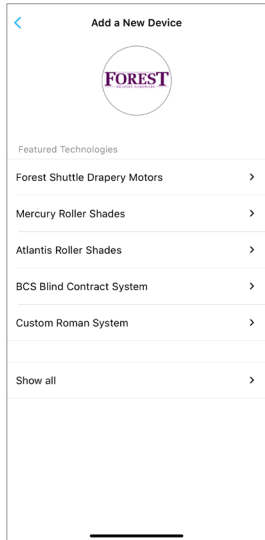


7. Choose your Bond Bridge Pro

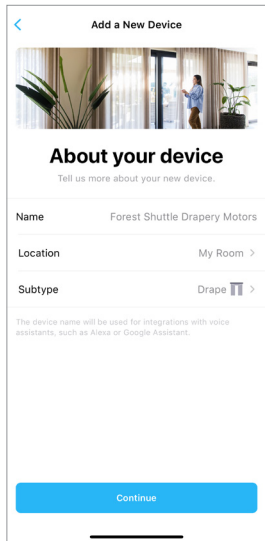


## PAIRING A SHUTTLE MOTOR TO THE BOND BRIDGE PRO SET UP INSTRUCTIONS WITHOUT USING A DIAMOND REMOTE (Continued)

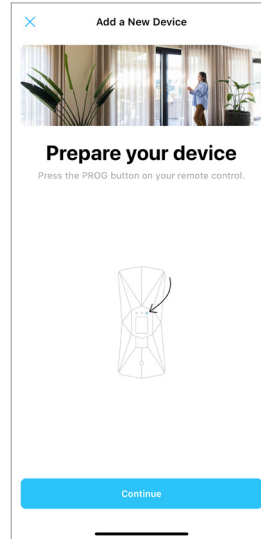
8. Tap "Forest Shuttle Drapery Motors"



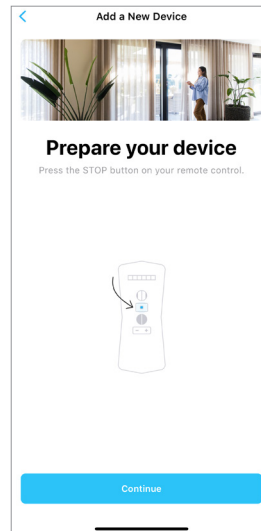
9. Name the motor, the location, and select "Drape" as the subtype. Then tap "Continue"



10. Skip the first step of the in-app instructions by tapping "Continue"

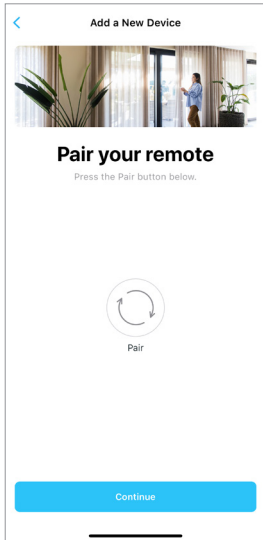


11. Skip the first step of the in-app instructions by tapping "Continue"

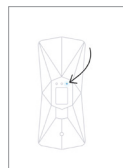
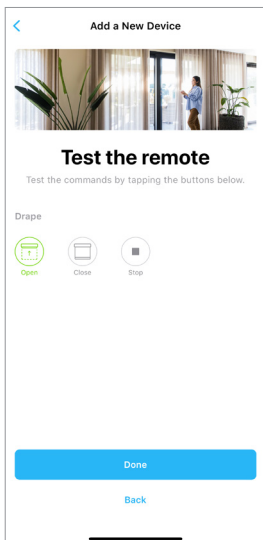


## PAIRING A SHUTTLE MOTOR TO THE BOND BRIDGE PRO SET UP INSTRUCTIONS WITHOUT USING A DIAMOND REMOTE (Continued)

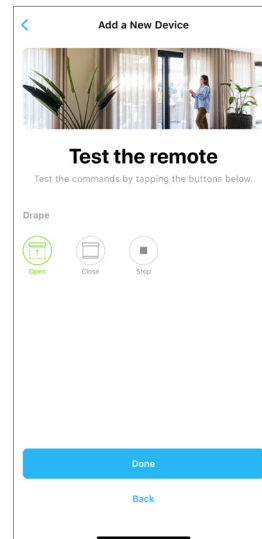
12. Tap "Pair" in the Bond Home app, then tap "Continue"



13. While the "Test the remote" screen is shown in the app:  
Press the Shuttle motor's program button 3 times, then press and hold it once more until the motor's LED 3 begins to flash.



14. In the Bond Home app, press the open button. The motor is now paired to the Bond Bridge Pro. Test the functionality using the in-app open, close, and stop buttons.



15. The Shuttle motor is now paired and can be found in the app's list of devices.

