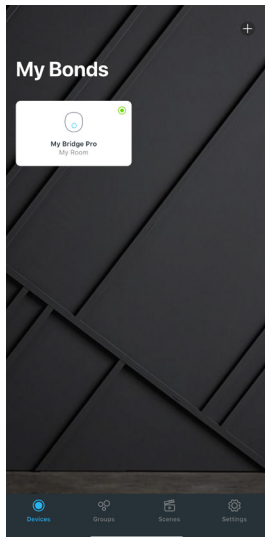


PAIRING A SHUTTLE MOTOR TO THE BOND BRIDGE PRO SET UP INSTRUCTIONS USING A DIAMOND REMOTE

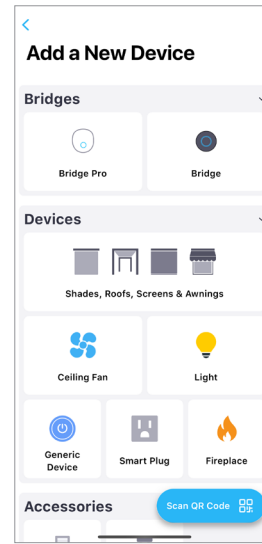
BY SIMPLY FOLLOWING THESE STEP-BY-STEP INSTRUCTIONS, YOU WILL SOON BE ENJOYING YOUR NEW BOND BRIDGE PRO FROM FOREST.

If you have not already, pair your Shuttle motor with your Diamond remote and set limits (Steps 1-7 below). If pairing is complete, skip to Step 8.

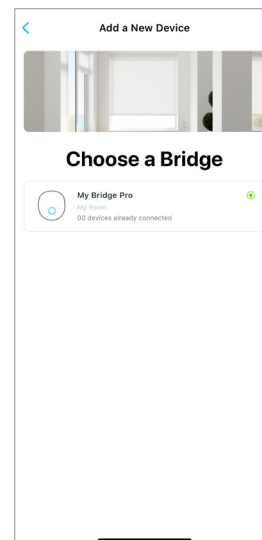
1. Begin with the drapes in the open position
2. Attach the Shuttle motor, then pull the master carrier. The Shuttle motor will automatically set its limits. The drapes will close and then return to the open position.
3. The Shuttle motor's LED 4 will remain lit for 10 seconds. If needed, the open limit can be changed by manually moving the master carrier during this time.
4. When the Shuttle motor's LED 4 is no longer lit, the limits are saved.
5. Press the program button in the Shuttle motor 3 times, then press and hold the program button until LED 3 flashes.
6. Press the open button on the Diamond remote.
7. Test the Diamond remote's connectivity using the open, close, and stop buttons.
8. Open the Bond Home app and tap + in the upper-right corner



9. Tap "Shades, Roofs, Screens, & Awnings"

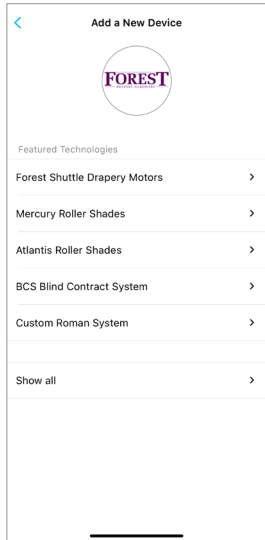


10. Choose your Bond Bridge Pro

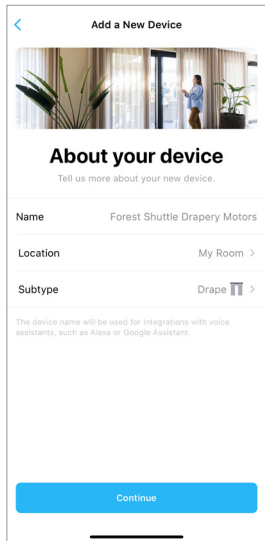


PAIRING A SHUTTLE MOTOR TO THE BOND BRIDGE PRO SET UP INSTRUCTIONS USING A DIAMOND REMOTE (Continued)

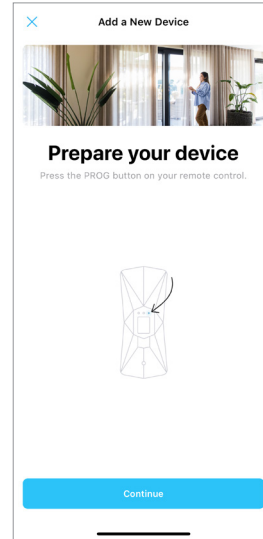
11. Tap "Forest Shuttle Drapery Motors"



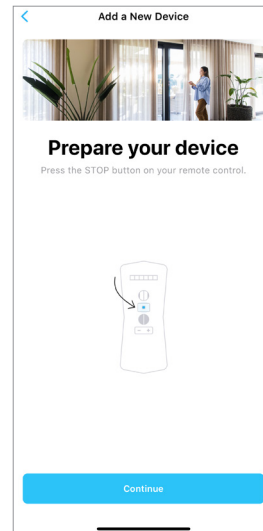
12. Name the motor, the location, and select "Drape" as the subtype. Then tap "Continue"



13. Press the P2 (PROG) button on the back of the Diamond remote. Then tap "Continue"

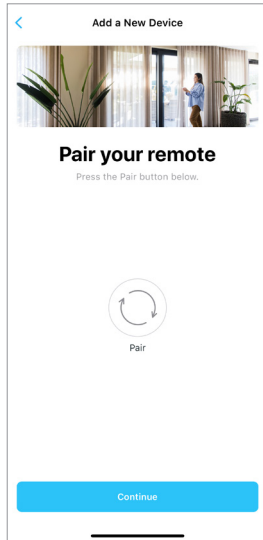


14. Press the STOP button on the Diamond remote. Then tap "Continue"

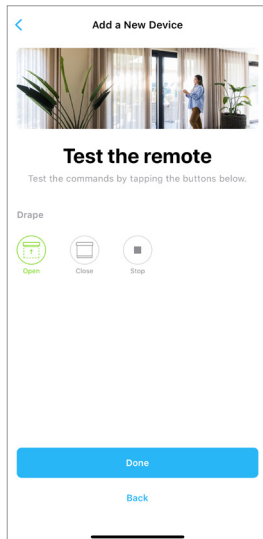


PAIRING A SHUTTLE MOTOR TO THE BOND BRIDGE PRO SET UP INSTRUCTIONS USING A DIAMOND REMOTE (Continued)

15. Tap "Pair" in the Bond Home app, then tap "Continue"



16. Test the functionality of the in-app Open, Close, and Stop buttons. Then tap "Done"



17. The Shuttle motor is now paired and can be found in the app's list of devices.

